



Hadar Jacobson

Art in Metal Clay

918 Ventura Avenue

Berkeley, CA 94707-2123

Studio: (510) 528-4193 Fax (510) 526-9130

Customer Service: (510) 837-9558

Champagne Bronze and Steel in Black and Gold Colors



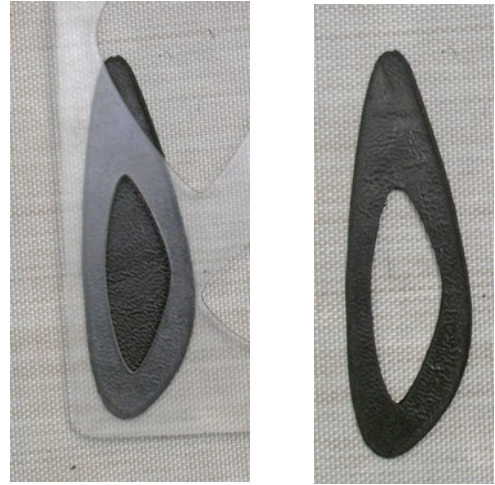
1. Roll a layer of Low-shrinkage Steel XT 6 cards thick. Choose a template and place it on the layer. Cut along the contour lines of the template.



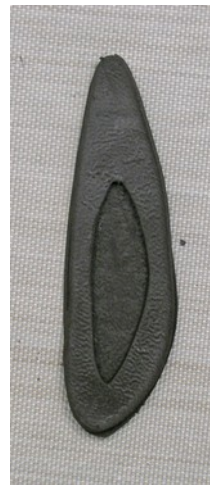
2. Repeat step 1. Now you have two identical shapes.



3. Choose a smaller template and place it on one of the shapes. Cut along the contour lines of the smaller template.



4. Place the shape with the cutout on the solid shape.



5. Use the smaller template to cut a shape out of Champagne Bronze.



6. Place the Champagne Bronze shape in the empty space in the steel layer.



7. Using a coffee stirrer, cut a hole at the top of the piece.

8. Dry the piece. If you dry it on a warming pan, make sure to flip the piece over and over until it stops curving.



9. Fire the piece for 2 hours at 1750°F (brick kiln) or 1830°F (muffle kiln).

10. Sand the bronze part of the piece with 220-grit sandpaper, then 400 grit, and then 600 grit.



11. Using a paint brush, paint the steel part with Birchwood Casey Super Blue Patina (available from Amazon).



12. The black color may cloud. Rub it with oil to get a shiny look.



13. Shine the bronze part with a polishing cloth. Be careful not to touch the steel part.



14. Seal the whole piece with an acrylic sealer such as PYM II.

