



## Hadar Jacobson

Art in Metal Clay

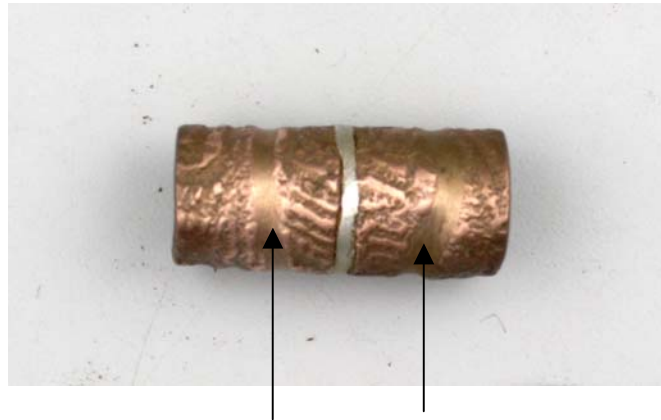
918 Ventura Ave, Berkeley, CA 94707-2123, (510) 528-4193

[hadar@pacbell.net](mailto:hadar@pacbell.net) • [www.artinsilver.com](http://www.artinsilver.com)

5/26/09

### Combining Bronze and Copper Clay

My first attempts at combining the two clays were successful but disappointing. The contrast was not sharp enough. In the photos below, the strips of bronze hardly show against the copper.



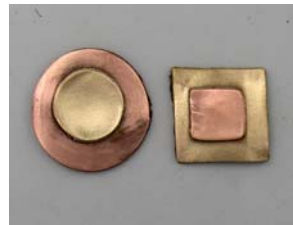
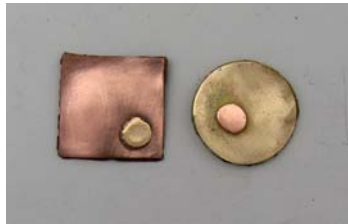
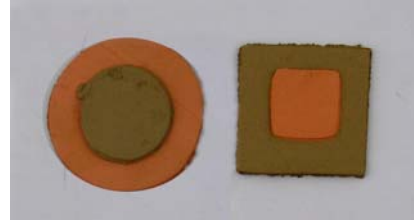
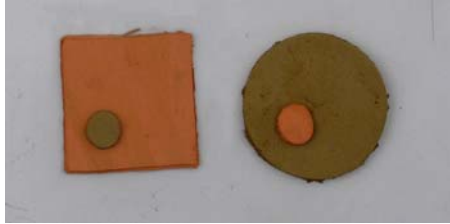
Since I was discouraged I didn't pursue this. I thought maybe brass clay will do the trick but there's still a lot on my plate before I get to brass clay.

Then my student Georgia Bassen came to class with her beautiful mixed metal pieces, and I decided to try again.

You can see more of Georgia's mixed metal work in the photo gallery on my blog.



I first tried overlays of copper on bronze and overlays of bronze on copper in different sizes. The pieces are connected with just water.



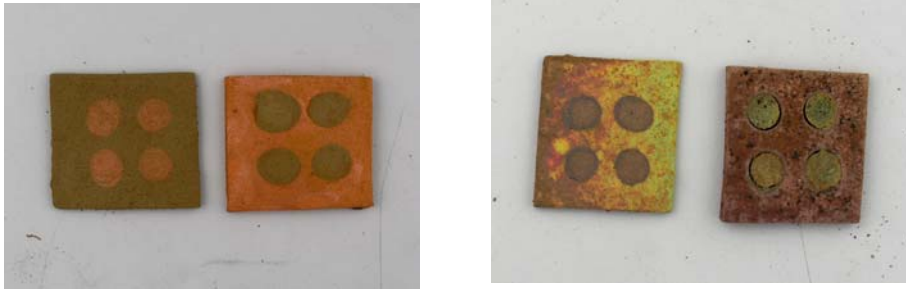
There was full sintering, and the pieces are well fused together. After buffing, the contrast showed well.

Then I wrapped a copper strip around a tubular bronze bead and a bronze strip around a copper tubular bead.



Again, full sintering, and after buffing, beautiful contrast.

Next I tried inlay of copper in bronze and inlay of bronze in copper. I rolled a thick layer of each clay and pressed a Lego piece in it to create indentations. I let the layer dry and filled the indentations with clay.



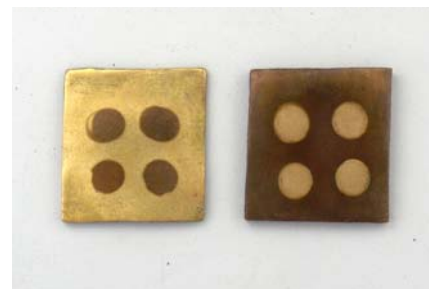
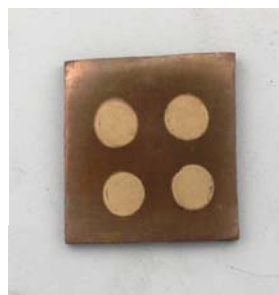
As you can see in the photo on the top right, copper inlay in bronze worked perfectly. However, since bronze clay shrinks more than copper clay, the bronze inlay pulled away, leaving some space between the copper and bronze.

Here is another example:



To correct it, I filled the cracks with bronze clay and re-fired.

This is how it looked after some finishing work.



Both inlay pieces after finishing

I made two half balls in the doming block and attached made a log from alternating squares of copper and bronze and copper clay rolled together.



In all cases, the bronze shrank more than the copper. I had to grind the copper down to the level of the bronze.



So why was the contrast so dull in my first attempts? I am not sure, but it may have to do with the presence of silver in those pieces.



The next page shows first few pieces that I've made by mixing copper and bronze clay:

