
How to Create a Gradient Surface Using an Extruder

The process looks long and complicated because I took a photo of every little step to make it as specific as possible. However, in real time it takes just a few minutes.

1. Using your extruder as a circular cutter, cut 3 copper circles and 3 bronze circles, 6 cards thick. Make a stack as shown in the photo, and put it back into the extruder.



2. Extrude a cane using the disc with the biggest square you have in the set.



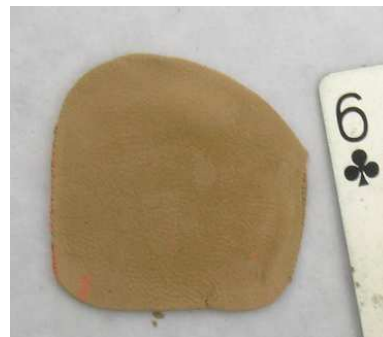
3. Tape 2 craft sticks to your work surface. The distance between them should be equal to the length of the cane. Now press the cane flat with your fingers. The sticks ensure that the cane expands in one direction only.



4. Using wooden blocks or plastic boxes, shape the layer into a square, pushing from both sides.



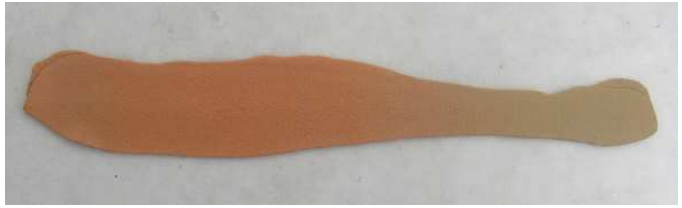
5. Roll the layer down to a thickness of 6 cards. Again, shape it into a square with the blocks.



6. Fold the layer in half, from bottom to top, and roll down again to a thickness of 6 cards. The layer will get longer.



7. Repeat step 6 a few times. The strip will get wider. Stop when you are satisfied with the gradation.



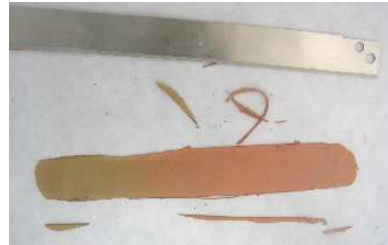
8. If parts of the strip are wider than others you can fold them in and roll again.



9. Roll the strip from one end to the other (either from the copper part to the bronze part or vice versa), to a thickness of 2 cards. That will make the strip even longer.



10. Optional: trim the sides of the strip to make it perfectly rectangular.



11. No part of this strip is just bronze or copper; it's all mixed in some ratio. To correct this, roll a little snake of bronze and place it on the bronze end of the strip (or make a snake of copper and place it on the copper end of the strip).



12. Start rolling the strip over the bronze (or copper) snake until a log is created.



13. Roll a layer of copper clay 6 cards thick. The width should be equal to the length of the log. Wrap it around the log and join the ends.



How to Create a Gradient Surface Using an Extruder



Top view of the log



Top view of the log
after cutting a slice



You can shorten the log.



You can make it longer by
rolling it with your fingers.



You can shape it into a
square or rectangle.



I cut a slice from the log and
rolled it in different directions
into the shape of a leaf.

